

PRESTON-EASTIN

Product Data – Positioners

Preston-Eastin Model PA-100 HD12

Capacity

- Weight: 10,000 pounds
- Offset of C.G. from table: 12 inches
- Eccentricity of C.G. from axis: 12 inches

Rotation

- Motor: Variable speed AC, 3 horsepower
- Speed range: 0.03 to 0.86 rpm
- Speed accuracy: 2% of set speed

Tilt

- Motor: AC brakemotor, 3 horsepower
- Range: 135 degrees forward tilt
- Inherent overhang: 9.00 inches

Elevation:

- Adjustment: Manual
- Range: 49 inches to 73 inches in 6 inch increments

Table:

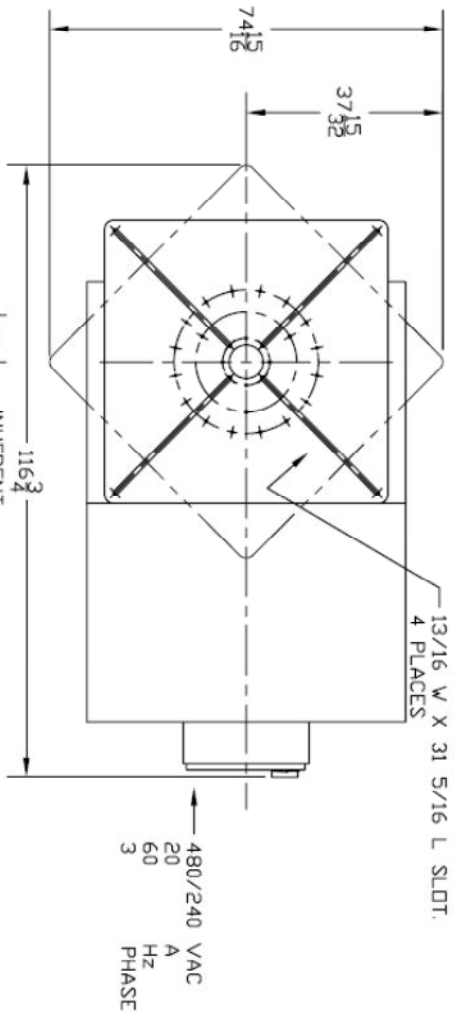
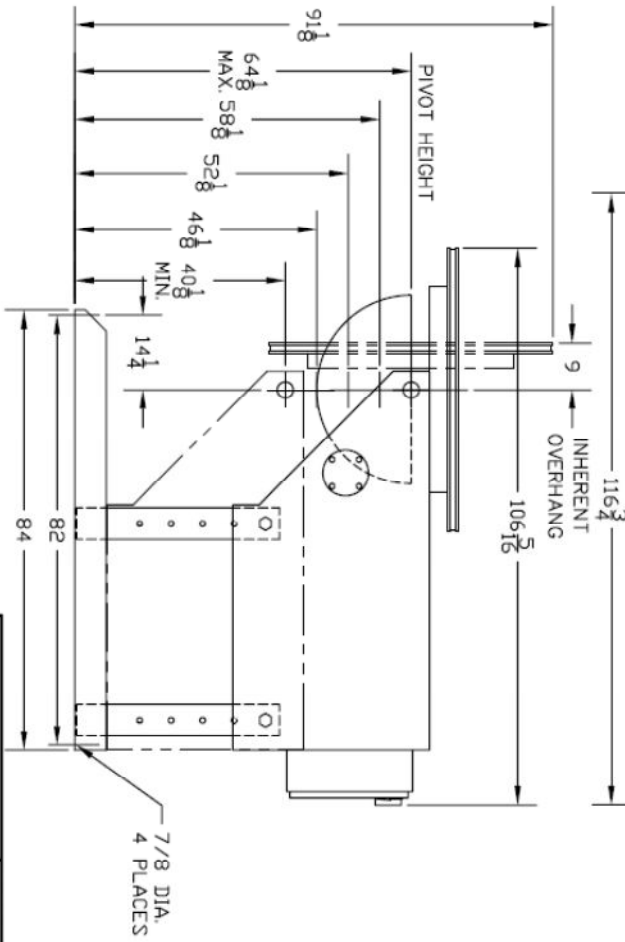
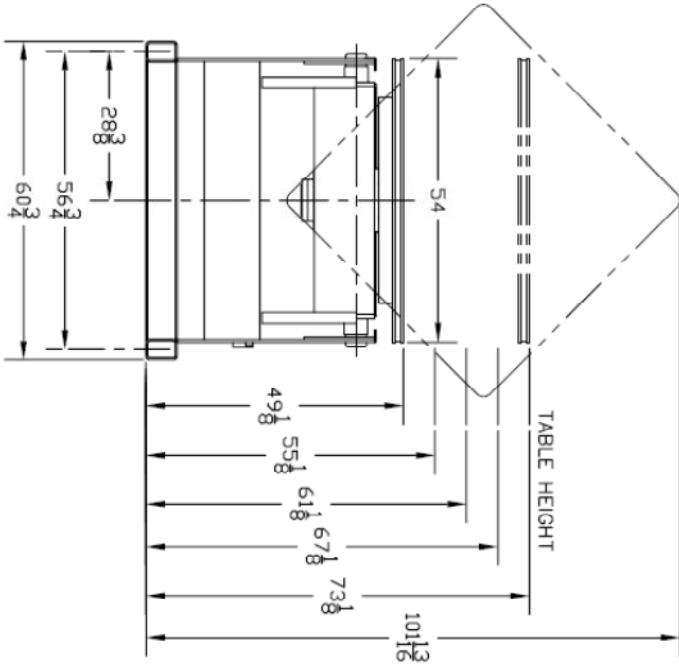
- Diameter: 54 inch square with four radial T-slots
- Mounting bolt size: 3/4 inch
- Bearings: Timken tapered roller bearings
- Ground: 2 each 600 amp spring-loaded mechanical ground

Controls

- Pendant: Remote pendant with 30 foot cable
- Rotation speed: One-turn potentiometer
- Rotation mode: Two-position selector switch, WELD/RAPID
- Rotation direction: Three-position selector switch, FWD/OFF/REV
- Rotation control: START and STOP pushbuttons
- Tilt directional control: Three-position momentary switch, UP/OFF/DOWN
- Power: 460/230V, 15/30A, three phase, 60 hertz.
- Overload protection: Circuit breaker
- Foot switch: Optional

Weight

- Shipping weight: 6250 pounds



		PERSTORP-SYSTEM INC. OULAKA FINLAND	
MODEL PA-100 HD-12	YEAR 20148	DIMENSIONAL OUTLINE	
<small>THIS DRAWING AND THE DESIGN ARE THE PROPERTY OF PERSTORP-SYSTEM INC. REPRODUCTION AND/OR USE WITHOUT WRITTEN PERMISSION IS PROHIBITED.</small>			